

BUCKLEY WELLS TRANSPORT ENTHUSIASTS

(Railway Section)

General Secretary:

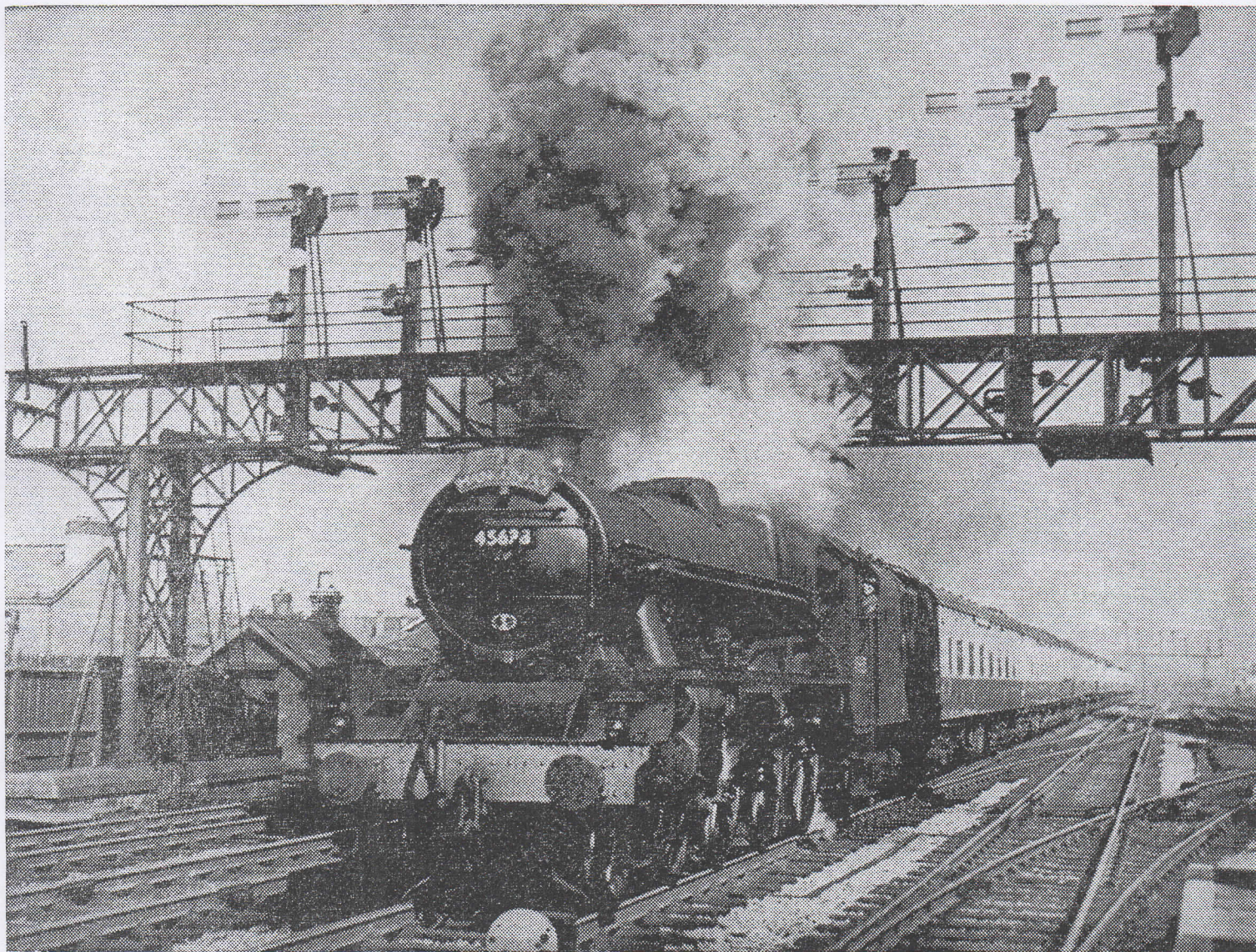
D. FELTON

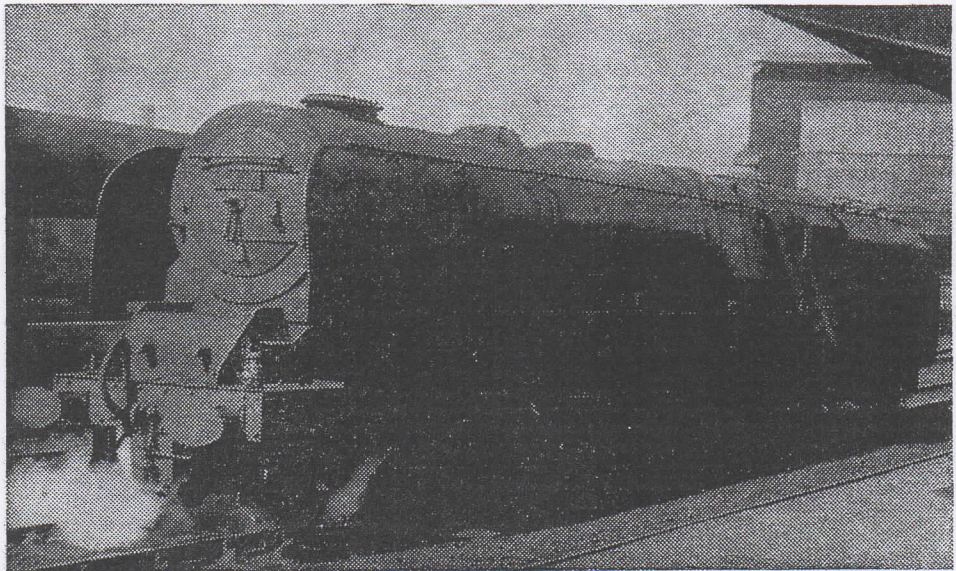
76 Heywood Street,

Bury, Lancs.

Telephone 061-764 4230

NORTHERN COUNTIES TRANSPORT SOCIETY





NORTHERN COUNTIES TRANSPORT SOCIETY

General Secretary.

M. W. Rose,
102, Crompton Road,
MACCLESFIELD,
Cheshire.
Tel. Macclesfield 2196.

Membership Secretary.

W. E. Hendry,
209, Warrington Road,
GLAZEBURY,
Nr. Warrington, Lancs.
Tel. CULcheth 3334.

Bookings Secretary.

S. Ridgway,
19, Sycamore Crescent,
MACCLESFIELD,
Cheshire.
Tel. Macclesfield 5884.

Sales Officer.

B. J. Towey,
25, Calder Crescent,
WHITEFIELD,
Manchester.
Tel. 061 - 766 6772.

Tours Planner.

W. J. Frisby,
60, Kings Road,
Fairfield,
BUXTON, Derbyshire.

Publicity Officer.

N. F. Capelle,
130, Brocklehurst Ave.,
MACCLESFIELD,
Cheshire.

Area Representatives:-

N. East. R. Hopper, 8, Sanderson Road, Horworth-on-Tees.
Altrincham. M. Garrity, 37, Mainwood Rd., Timperley, Ches.
Sheffield. D. L. Holt, 35, Windyhouse Lane, Sheffield, 2.
Macclesfield. D. Bullen, 18, Amberley Rd., Macclesfield.
W. M/cr. C. Binch, 22, Lindum Ave., Old Trafford Manchester.
Sleaford: A. Law, 38, Cromwell Crescent, Sleaford, Lincs.

We are in need of area representatives in other areas, so if you are interested and over 15 years of age please contact the publicity Officer (Address above) for further details.

Photographs :-

Outside Front Cover: L. M. R. "Jubilee" Class 45638, 'Zanzibar' with a London bound "Mancunian" near Longsight.

Inside Front Cover: Top L.M.R. "Coronation" Class 46241 'City of Edinburgh' with a South Bound freight over Shap. Below. L.M.R. "Coronation" Class 46247 'City of Liverpool' stabled at Carlisle station before taking a South bound passenger train.

Inside Back Cover: Stanier Black "5s" at Newton Heath Motive Power Depot, Manchester, from left to right, 44821; 45258 and 45482.

Outside Back Cover: Stanier 4MT 2-6-4 Tank, No. 42644 at Trafford Park Motive Power Depot, Manchester.

Magazine Number 1: October, November and December, 1969.

The above mentioned Society was formed on Wednesday 1st October, 1969, from members of the former East Cheshire Railway Enthusiasts and the Buckley Wells Railway Enthusiasts.

The NEW Society, will continue to organise and operate various tours to all types of Railway Installations. Coach tours will have to be at a slightly increased price, owing to the rise in the cost of coaches in recent months, along with the charges B.R. are now making for permits in most areas.

All bookings for tours should be sent on the enclosed application forms only, to the Bookings Secretary, S. Ridgway, 19, Sycamore Cres, Macclesfield, Cheshire, not forgetting to enclose a stamped addressed envelope for your receipt, no S.A.E. no receipt. Until new membership cards are produced and issued please do NOT send your B.W.R.E. membership card, when booking for a tour.

Subscriptions will now be a standard 5/0d per annum and new membership cards will be issued to all concerned with the next edition of this magazine in December. In the mean time will you please use your present membership number. Members who joined either Society in a January, February or March, will have to re-new their subscriptions on 28th February, each year, those who joined in either April, May or June will fall due on the 31st May each year and so on.

The Standard conditions of Membership of the previous two Societies will also apply to the Northern Counties Transport Society. If any members require copies of the Conditions of Membership and/or application for Membership forms, will they please Contact the Membership Secretary, W. R. Hendry, 209, Warrington Road, GLAZEBURY, Near Warrington, Lancashire.

This magazine will be issued at approx three monthly intervals during December, March, June and September. The monthly news sheets issued by the East Cheshire Railway Enthusiasts will cease to be produced as and from 1st October, 1969. If any member requires monthly information on re-allocations etc., these can be obtained from Viva Transport Publications, price 10/0d per year, for further information see advert in this magazine.

Other publications and booklets etc., will be available for purchase from the Sales Officer, B. J. Towey, 25, Calder Crescent, Whitefield, Manchester in the course of the next few weeks. Full details will be given to you on coach tours and in the next edition of this magazine.

We hope that this new Society will prove succesful, but remind you, that this will depend on what kind of support you give the Society, by attending tours etc.

Northern Counties
Transport Society.

1st October, 1969.

NOTICES

STAMPED ADDRESSED ENVELOPES -- These MUST be enclosed with all correspondence to all Society Officials. No S.A.E. No reply.

POSTAL ORDERS/CHEQUES - These MUST be made payable to the Northern Counties Transport Society, and not individuals. All P.O.s and cheques must be crossed A/c Payee Only, but if you do not know how to fill a postal order in correctly, please leave it blank. If any postal orders are refused by the bank a person will automatically lose his place.

CHANGE OF ADDRESS: These should be notified to the Membership Secretary, W. R. Hendry, Esq., 209, Warrington Road, Glazebury, Near Warrington, Lancashire, as soon as ever possible.

MEMBERSHIP NUMBERS: These should be quoted on all correspondence to any Society Official.

BOOKING FOR TOURS: All bookings MUST be sent on the enclosed application form to the Bookings Secretary, not forgetting S.A.E. for reply. If you have paid a deposit towards a tour you must pay the remaining balance at least 7 days before the intended tour. Bookings by telephone can not be accepted, under any circumstances.

ATTENDANCE ON TOURS: If a member fails to appear for a tour, for which he has booked, he will only have his money refunded if someone else can be found to fill his place, or if medical evidence can be produced. If for any reason you find that you are unable to attend a tour at the last minute, please ring the General Secretary. If by any chance you think you might be a few-minutes late for a tour, by bus or train running late etc., please ring the General Secretary's home with anticipated time of arrival at meeting place. Please remember that the coaches will depart from the picking up points at the times stated prompt, and will not wait for late arrivers. So please give yourself plenty of time to get to your joining point.

PICKING UP PLACES: Coach picking up points are listed on page number 7. Members can also be picked up at other points if on the direct route of the coach with prior arrangement with the bookings Secretary. However all departure times from picking up points are not stated. If Burnley and Colne are advertised, coach also picks up in Brierfield and Nelson. If Bolton and Manchester are advertised, coach picks up in Farnworth, Moses Gate, Kearsley, Pendlebury & Swinton and Pendleton Church. If Manchester & Sheffield are stated coach will also pick up in Ashton-under Lyne, Hyde, Tintwistle etc., but once again all these points MUST be with prior arrangement when booking.

ADVERTS: Any type of advert can be included in this magazine at very reasonable cost (Special rates to members). Remember that this magazine has a circulation of nearly 1,000. For further details please contact the General Secretary.

LOCOMOTIVE INFORMATION AND RAIL-NEWS, Items of rail-news, and other articles for inclusion in the next edition of this magazine must be sent to Mr. D. Felton, 76, Heywood Street, Bury, Lancashire, to arrive no later than 1st December, 1969. Remember the success of this magazine, and the contents there-in depend entirely on you, so send what you can for inclusion, every little bit can be of some use.

T O U R S P R O G R A M M E

Sunday 19th October, 1969. EAST ANGLIA Tour Number 69/142P

Motive Power Depots to be visited will include:- 31A Cambridge; 31B March; 32A Norwich; 40A Lincoln; 40B Immingham; 36A Doncaster; and 36C Frodingham, also various stabling points en route. Coach will depart Saturday evening as follows:-

	Macclesfield	at 6-00pm	due back at 9-45pm
Cost will be £2-5-0d	Stockport	at 6-30pm	due back at 9-15pm
Minimum deposit 15/0d.	Manchester	at 7-00pm	due back at 9-00pm
	Sheffield	at 8-30pm	due back at 7-30pm

Sunday 2nd November, 1969. CREWE WORKS Tour Number 69/143C

Visit to Crewe Locomotive Works Only. Two parties, one at 12-30pm and one at 2-30pm prompt. Members should book in advance, visit fee 1/6d per head, and meet at Victoria Avenue entrance 10 minutes before the time stated. PLEASE STATE WHICH PARTY WHEN BOOKING.

Sunday 9th November, 1969. NORTH EAST Tour Number 69/144N

Motive Power Depots to be visited will include :- 50B Hull Dairycoates; 50D Goole; 51A Darlington; 51L Thornaby; 52A Gateshead; 55A Holbeck (Leeds); 55B York; 55C Healey Mills and 55H Leeds Neville Hill. The coach will depart Saturday evening as follows:-

	Macclesfield	at 6-00pm	due back at 9-45pm
	Stockport	at 6-30pm	due back at 9-15pm
Cost will be £2-10-0d	Manchester	at 7-00pm	due back at 9-00pm
Minimum deposit 15/0d.	Bury	at 7-20pm	due back at 8-45pm
	Burnley	at 8-00pm	PICKING UP ONLY
	Colne	at 8-15pm	PICKING UP ONLY

Sunday 23rd November, 1969. LONDON Tour Number 69/145L

Motive Power Depots to be visited will include:- 1A Willesden; 14A Cricklewood East; 30A Stratford; 34G Finsbury Park; 34D Hitchin; 70B Feltham; 75C Selhurst; 75D Stewarts Lane and 81A Old Oak Common. Coach will depart Saturday evening as follows:-

	Macclesfield	at 6-00pm	due back at 9-45pm
Cost will be £2-10-0d	Stockport	at 6-30pm	due back at 9-15pm
Minimum Deposit 15/0d.	Manchester	at 7-00pm	due back at 9-00pm
	Sheffield	at 8-30pm	due back at 7-30pm

Sunday 7th December, 1969. DERBY & CREWE Tour Number 69/146D.

Motive Power Depots to be visited will include 5A Crewe CDMD; 5B Crewe South; 6A Chester. Also Derby Works Only, Crewe Works, and depots and stabling points in the Liverpool area depending upon time etc. Coach will depart Sunday morning as follows :-

Cost from Burnley &	Colne	at 7-00am	due back at 10-00pm
Colne £1-10-0d.	Burnley	at 7-15am	due back at 9-45pm
	Bury	at 8-00am	due back at 9-15pm
Cost will be £1-5-0d	Bolton	at 8-15am	PICKING UP ONLY
Minimum deposit 10/0d.	Manchester	at 8-45am	due back at 9-00pm
	Stockport	at 9-00am	PICKING UP ONLY
	Macclesfield	at 9-30am	PICKING UP ONLY

TOURS PROGRAMME CONT.

Sunday 14th December, 1969. MIDLANDS Tour Number 69/147K

Motive Power Depots to be visited will include :- 1E Bletchley; 2A Tyseley; 2E Saltley; 2F Bescot; 16A Toton; 16B Colwiok; 16C Derby and 16F Burton; also 31B March; 40A Lincoln; and 85A Worcester. Also various stabling points etc. Coach will depart Saturday evening as follows:-

	Macclesfield	at 6-00pm	due back at 9-45pm
Cost will be £2-10-0d	Stockport	at 6-30pm	due back at 9-15pm
Minimum deposit 15/0d	Manchester	at 7-00pm	due back at 9-00pm
	Sheffield	at 8-30pm	due back at 7-30pm

Sunday 4th January, 1970. SOUTH WALES Tour Number /148W

Motive Power Depots to be visited will include:- 82A Bristol (Bath Road, subject to permits being available), 85A Worcester; 85B Gloucester; 86A Cardiff Canton; 86B Newport Ebbw Junction; 86E Severn Tunnel Junction; 87B Margam and 87E Landore, also Barry Island Scrap Yard, and Valley Stabling points. Coach will depart Saturday evening as follows:-

	Macclesfield	at 6-00pm	due back at 9-45pm
Cost will be £2-10-0d	Stockport	at 6-30pm	due back at 9-15pm
Minimum deposit 15/0d	Manchester	at 7-00pm	due back at 9-00pm
	Altrincham	at 7-25pm	due back at 8-45pm

VISITS TO CREWE WORKS ONLY: Official visits to Crewe Works Only have been planned on Sunday 2nd November, 1969, on both the 12-30pm and 2-30pm parties. On Sunday 7th December, 1969, there will be one visit only at 2-30pm, for a limited number of members only. Places can only be reserved if you sent a 1/6d P.O. to the bookings Secretary. If you want to visit Crewe Works on any other Sunday, this MUST be booked direct with Crewe Works, by sending a 1/0d P.O. to :- The Works Managers Office, British Railways Workshops, Locomotive Works, CREWE, Cheshire, not forgetting to send a S.A.E.

COACH PICKING UP AND MEETING POINTS :-

MANCHESTER - Victoria Railway Station (Adjacent to 19 bus stop)
ALTRINCHAM - Railway Station Forecourt
BOLTON - In front of Trinity Street Railway Station.
BRIERFIELD - X43 Bus Stop (Manchester)
BURNLEY - Burnley Central Bus Station
BURY - Art Cinema (Bingo Hall), Knowsley Street.
COLNE - In front of Railway Station
FARNWOTH - Black Horse Hotel
KEARSLEY - Moss Rose Hotel
HYDE - Opposite Market place on the A57
MACCLESFIELD - Railway Station (Bottom of Car Park)
NELSON - Nelson Centre (In front of transport Offices)
SHEFFIELD - Forecourt of Midland Railway Station
SWINTON - Windmill Hotel, Corner of Station Road.
STOCKPORT - Foot of Station approach Road (Wellington St. South)
Members can also be picked up at other points if on the direct route of the coach, with prior arrangement with Booking Secretary

RAIL - NEWS

Derby Works: The Open Day was held here on Saturday 30th August, 1969. Exhibits :- 100; 3399 and 5173. Other locos on works :- 49; 45; 5388; 5378; 177; 19; 127; 24; 2; 5031; 145; 42; 5082; 7636; 7633; 7626; 125; 102; 5007; 3363; 7500; 3008; 3021; 3790; 3052; 5175; 5385; 15; 74; 3530; 3372; 3570 and 3110.

Gidge Bridge: Stabled here on 1st September were 26041; 26046; 26012; 26053; 26050; 3700; 3699; 293; 213; 233; 7573; 7677; 7588; 26014; 4145; 7570; 3695; 3854; 3988 and 5200

Longmoor held its annual open day on 5th July, 1969, and present at this were: 34023; 35028; 41298; 92203; 600 Gordon and 75029.

Allerton: held its open day on 26th July, and 7029; 5428 and 5593 steam locos were brought up from Tyseley. Also noted on the depot were: 4147; 216; 223; 246; 269; 409; 2850; 2852; 3008; 3353; 3359; 3778; 5202; 7637; E3013; E3133/4; E3189; E3191/6.

Lakeside Society: Carnforth. Open days here over the Bank Holiday weekend saw as follows:- 46441; 42073; 42085; 61306; 44871; 45231; 44806; 45407; 44932 and 44767. Attempts by the directors of this branch to secure a French loco have succeeded and none other than a S.N.C.F. "231K" Super Pacific, being No. 231.K.22 has been purchased. Arrangements are also in hand for the import of a type 21b mogul of the Norwegian State Railways.

Pegler Enterprises: The last steam hauled special was run behind 4472 "Flying Scotsman" on 31st August, 1969, between Kings Cross and Newcastle, with a 3 hour stop at York on the down and one hour on the up journeys. The locomotive sailed from Liverpool to Boston, Massachusetts on 18th September, 1969, to start its tour of America. The engine is not expected to return home until June or July, 1970

Chester: In the early hours of 9th July, a coal train breaks failed outside Chester, and to avoid a serious collision in the Station, the run-away train was routed into the Motive Power Depot. In consequence a line of locomotives at the refueling point were demolished, they were:- 5043; 5093; 5138; 5139 and 1617. The class 47 is now in Crewe Works being rebuilt and all the class 24s have since been withdrawn. However the following have been reinstated in their place: 5007; 5010; 5011; 5016 and 5017.

Selhurst: The latest 4VEP units seen here during August were Nos 7788/90, also on the depot an unusual sight was 863.

Kestral Despite work recently carried out between April 2nd and 16th June, by Hawker Siddeley on this prototype locomotive bogies, to enable it to work passenger trains, so far no reports of this have yet been received. The loco is now mounted on B.R. type 4 bogies with a maximum axle load of 21 tons. Although recently seen on various depots, this locomotive is still officially on loan to 41A Tinsley. Main work still appears to be coal traffic between Shirebrook and Whitmoor.

Scottish Region: Dunfermline and Thornton depots are to close shortly, and will be reduced to a signing on point only when the new depot of Townhill, Dunfermline is open shortly. This new depot will serve the whole of Fife, and may even activate the closure of Dundee depot in the not to distant future.

Broomhouse Tunnel: Part of the main line between Sheffield and Chesterfield, was closed for three weeks between 17th August and 7th September, while engineers removed the 92yard long tunnel situated $9\frac{1}{2}$ miles south of Sheffield. During the closure the tunnel was removed and replaced with a cutting. Works had been going on for sometime to prepare for this removal. During the alterations, quite a lot of diversion had to take place, and a large number of trains used Sheffield Victoria Station, including St. Pancras - Manchester Trains.

Didcot: The Great Western Society held its first Open Day at this depot on 20th September, 1969.

Ashington, Northumberland. Ex B.R. locos being used by the N.C.B. here are D9528 (100); 9508 (99); 9511 (98); 9518; 9514; 9545; 9502 and 9527. Number in brackets is the NCB number.

Philadelphia. Ex B.R. locos in use here by the N.C.B. are :- 12133; 12119; 12120; D9540; 9504 and 9525. Also stored in the works here is 60007 Sir Nigel Gresley.

Carlisle Yard: Stored in the yard here on 20th August, were the following:- 5701/2/6/7/8/11/2/4/6/7/9. 8501/3/6/7/9/10/1/4/6/7/8/9/20/2/3/4/6/7/8/9/30/1/2/3/4/77.

However on Monday 15th September, 1969, D5706; 5701 and 5702, were seen being pulled by 1795 through Blackburn, enroute for Guide Bridge, but the final destination was unknown.

Chesterfield: Noted here during August were 5906/7 enroute for Cohens Scrapyard at Kettering.

Preston: Seen through here on special on 6th September, were 399; 5148; 1732; 6801; 1537; 5584; 1596; 5174 and 1921.

Barrow Hill: The first public open day was held here on 14th September, 1969, and locomotives on show were 1575; 6702 and HS4000. Rides were given up and down the depot yard.

Woodhead Electric Line: 26000 Tommy recently reinstated from store is now to be seen as a regular worker on passenger traffic on this line. Air brake tests and training were carried out once again on 10th September, between Rotherwood and Motterham. It is believed that normal running of air braked trains will commence during October. Locomotives now fitted for Air Brake working on this line are 26007/8/10/11/16/23/24/25/28/30.

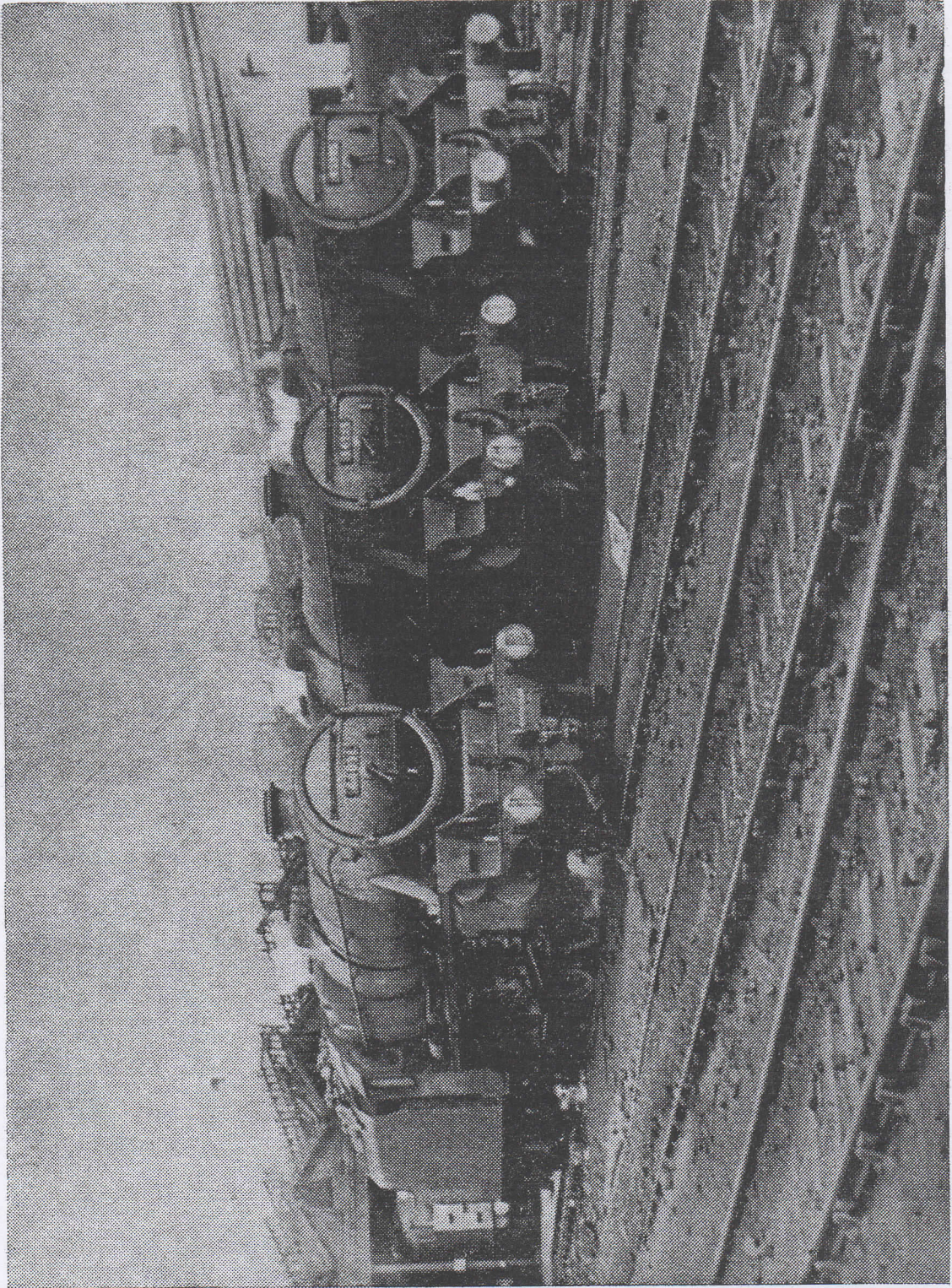
Toton: D1-10 recently reprieved from withdrawal, are still to be seen on regular freight work in the area, and at least two of these locomotives have been noted going through Derby Works over recent months.

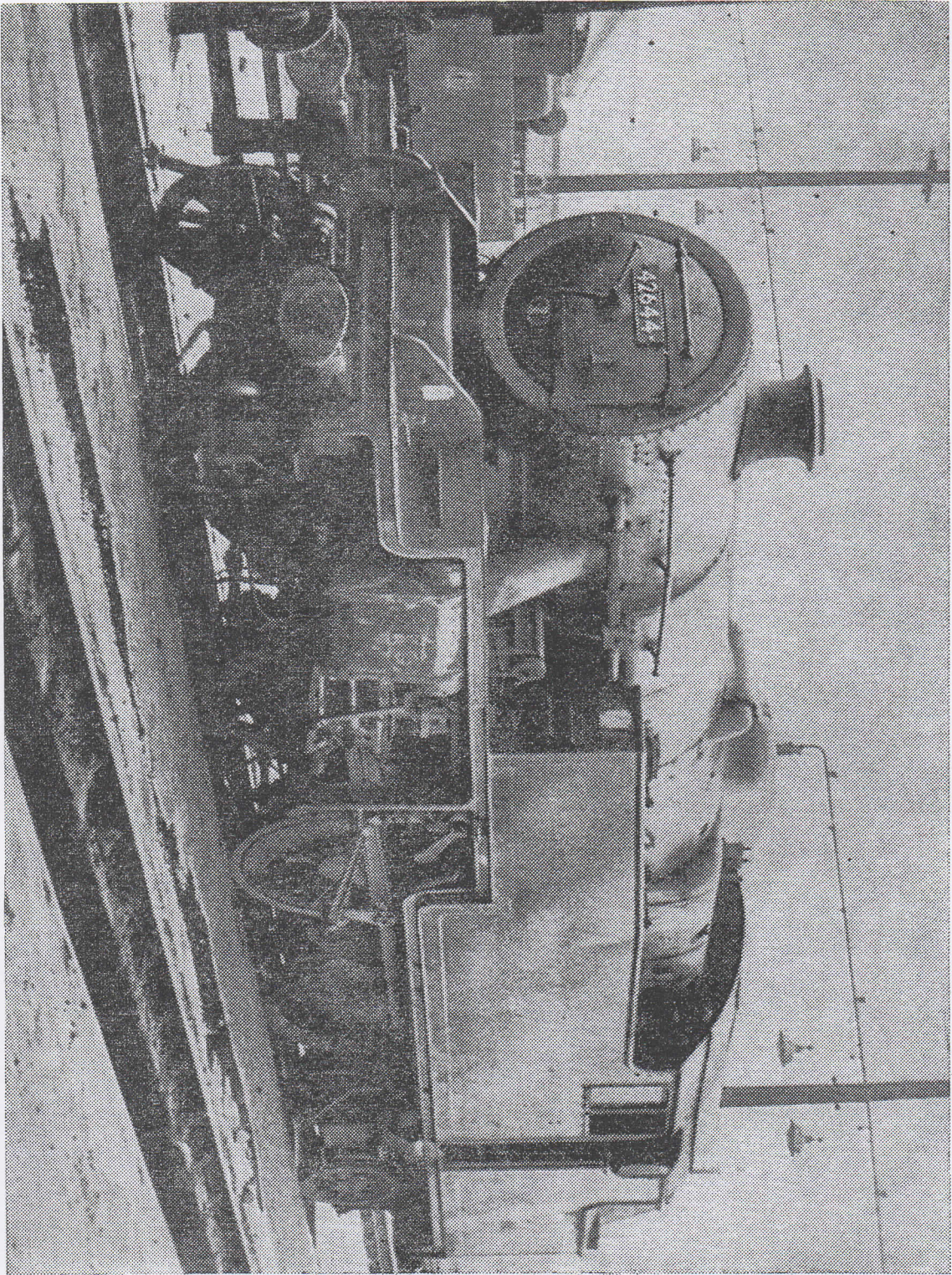
Llantrisant: 1512 was noted working a ballast train here on Sunday 14th September, and was later in the day seen at Cardiff and Newport. Also on this date no fewer than 6 peaks were noted at Severn Tunnel Junction.

Derby Research Laboratories. Noted here on 12th September, were S15705 (D5705); 8512; 8521 and 5901.

For information in the above we are indebted to Messrs: H. Howells R.C. Hall; D.J. Bullock; C.R. Holt; J. Parry;; R. Pearson; P. Baker P. Tuffnell; A. Hudson; A. Doggrell; S. Barnes; K. Hyde; G. Muir; P. D. Cottam; A. Eastham; W. Robinson; K. Benton; G. Hill; D. Felton; D. Lewis; B. J. Towey; M. Tarren and others.

Printed by Viva Transport Publications, 76, Heywood Street, Bury, Lancashire. (Tel. 061 764 4230), and Published by the Northern Counties Transport Society, 19, Sycamore Crescent, Macclesfield, Cheshire.
4th October, 1969.





>
>

>
>

>
>